



**PRINCIPAL SPECIFICATIONS**

Model Number	Freq. Range, MHz	Freq. Perform., MHz	Isolation, dB		Insertion Loss, dB		Phase Balance, °		Amplitude Balance, dB		VSWR In/Out		Input Power* Max.
			Min.	Typ.	Max.	Typ.	Max.	Typ.	Max.	Typ.	Max.	Typ.	
PDM-20-10	0.05 - 20	0.05 - 20	30	33	0.5	0.3	1°	0.5°	0.2	0.1	1.3:1	1.2:1	2 W
PDM-20-50	1 - 100	1 - 100	30	35	0.5	0.3	1°	0.5°	0.2	0.1	1.3:1	1.2:1	3 W
PDM-20-250	10 - 500	10 - 400	30	32	0.5	0.4	2°	1°	0.2	0.1	1.3:1	1.2:1	3 W
		10 - 500	30	32	0.6	0.5	2°	1°	0.2	0.1	1.3:1	1.2:1	3 W
PDM-20-500	5 - 1000	5 - 1000	25	30	1.0	0.7	2°	1°	0.2	0.1	1.3:1	1.2:1	1 W
PDM-20-1100	200 - 2000	500 - 1500	23	27	1.0	0.3	4°	2°	0.3	0.1	1.4:1	1.2:1	2 W
		200 - 2000	15	20	1.5	0.8	6°	3°	0.3	0.1	2.0:1	1.5:1	2 W

\*CW input power when used as divider with 1.2:1 VSWR<sub>Out</sub>.

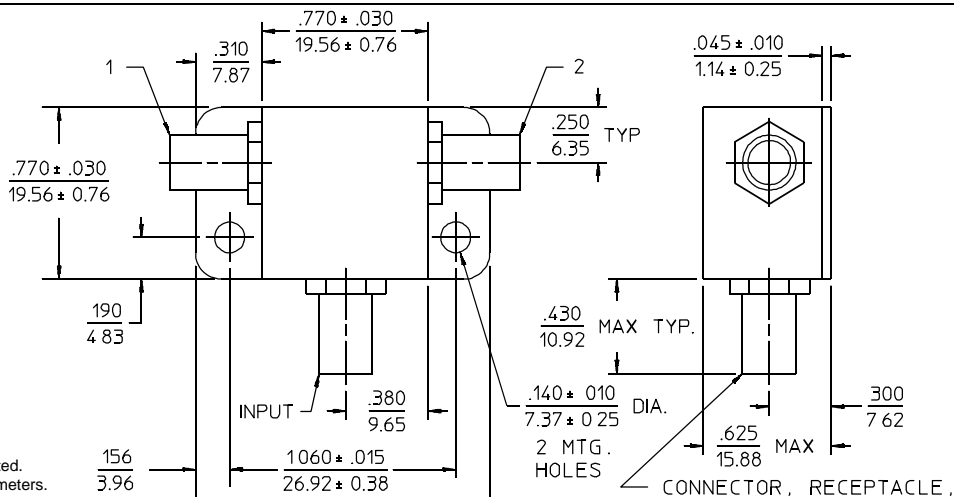
**General Notes:**

1. The PDM-20 series of connectorized two way In-Phase Power Dividers/Combiners covers 50 kHz to 2 GHz using lumped element design providing very broad bandwidths.

**GENERAL SPECIFICATIONS**

Impedance: 50 Ω nom.  
 Internal Load Dissipation:  
     PDM-20-1100: 125 mW max.  
     All Others: 250 mW max.  
 Weight, nominal: 1 oz. (28 g)  
 Operating Temperature: -55° to +85°C

**Package Outline**



NOTES:  
 1. Tolerance on 3 place decimals ±.020(.51) except as noted.  
 2. Dimensions in inches over millimeters.

19Feb96